

# Somers Primary School



## SPS NEWSLETTER

Term 1 - Issue 3 Thursday 7th March, 2024

### Principal's Report



*Dear Families,*

Congratulations to all of our students who demonstrated our school value of Engagement and participated in the District Swimming Sports last week! Well done to Darcy, Ben and George who made it on to Division swimming championships.

Our Prep students commence full time attendance next week, with the last Wednesday individual assessments taking place on Wednesday 6<sup>th</sup> March.

#### School Council

Nominations for our seven vacant positions on our School Council have been received, and I would like to welcome Chris Tringrove, Ceinwen Gould, Emma Warden, Brooke Killeen, Sarah Grose, Lisa Scoble and Richard Hutchinson to our school council for 2024.

Our Annual General Meeting will be held on Tuesday 19<sup>th</sup> March at 6:30pm in the staffroom. At this meeting our 2023 Annual Report will be presented and our office bearers elected.

#### NAPLAN Dates

NAPLAN assessments will take place for our year 3 and year 5 students from Wednesday 13<sup>th</sup> March (next week). Students will complete the Writing assessment on Wednesday 13<sup>th</sup>, Reading assessment on Thursday 14<sup>th</sup>, Language Conventions assessment on Friday 15<sup>th</sup> and Numeracy assessment on Monday 18<sup>th</sup>. We ask that families prioritise their child's attendance on these days. Students who are absent on test days will be given the opportunity to catch up their assessments from Tuesday 19<sup>th</sup> March until Friday 22<sup>nd</sup> March.

#### Enrolment Tours

We are currently conducting tours for enrolment for 2025. Tours will take place in terms one and two, with enrolments for Prep 2025 opening on Monday 15<sup>th</sup> April.

To book a tour, please call us on

59835546 or email

[somers.ps@education.vic.gov.au](mailto:somers.ps@education.vic.gov.au)



### Private Music Lessons at School

In addition to private guitar lessons, students can now access private singing lessons with teacher Meg. To enquire, please contact Meg on 0400 343 453 or email [megan.oldmeadow@gmail.com](mailto:megan.oldmeadow@gmail.com).

### Year 5/6 Camp

We are in the process of booking a three-day camp to replace our cancelled Year 5/6 Canberra Camp. It is likely that this camp will take place in December of this year at one of the adventure camps on the Mornington Peninsula. Further information will be sent home to families when this camp is booked.

### Understanding How Your Child is Assessed

Across our school, teachers use assessment to determine students' learning goals, identify progress against the Victorian Curriculum and evaluate the impact of teaching on student learning.

In English, our teachers use a number of assessments to understand what students can do, and their next steps for learning. Our Prep teachers are currently administering the English Online Interview with all Prep students, which assesses students' letter and sound identification, concepts about print, hearing and recording sounds in words, phonemic awareness and oral language. In addition, teachers in years Prep, One and Two use the PM Benchmark reading assessment,

Letter and Sound Identification, Elementary Spelling Inventory and Sutherland Phonological Awareness test to monitor students' progress in English.

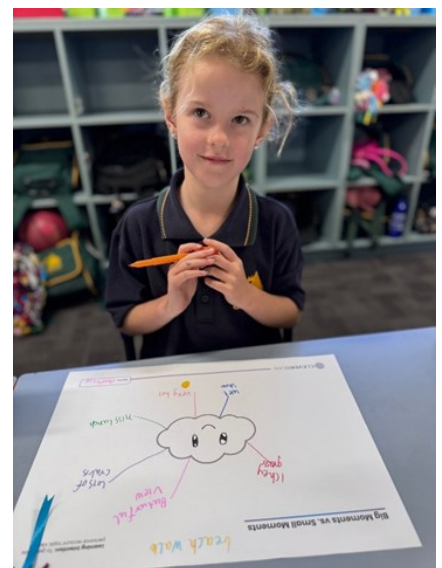
Students in years Prep, One and Two also use the Mathematics Online Interview to better understand student progress in counting, place value, addition and subtraction and multiplication and division.

Across our school, all levels use the Elementary Spelling Inventory to monitor students' development of phonemic awareness and

spelling. We also use a whole-school writing assessment, and students engage in regular moderated writing assessment tasks to demonstrate the skills that they can demonstrate independently.

In years three to six, along with PM Benchmarking reading assessment, our school uses twice-yearly Progressive Achievement Testing (developed by the Australian Council for Educational Research) to monitor progress and determine learning goals in Reading and Mathematics. These assessments are conducted in mid term 2 and mid term 4.

In addition, our teachers use checklists, rubrics and anecdotal observations to monitor ongoing student progress and determine next steps of learning. The collection of evidence of student learning is combined with standardised assessments to report student progress to parents in twice yearly reports.



### Walking School Bus Safety

Recently there have been some parents asking to pick up students whilst students are walking to the Walking School Bus line, or whilst walking to the Reserve when on the Walking School Bus. This can make effective supervision tricky. All parents are required to sign their children out at the office if picking them up prior to the 3:30 bell, or handover at Stone Reserve if taking the Walking School bus. We appreciate parent's assistance in making the Walking School Bus a safe and effective way of easing congestion around the school.

### Beleza Uniform Shop Store Closure for Labour Day Public Holiday

We have received notification from Beleza that they will be closed on Monday 11th of March for the Labour Day Public Holiday. They will reopen for usual trading hours from Wednesday 13th March.



### Postponement of the Life Ed Year 6 'Talk About It' program

The 'Talk About It' program for our Year 6 students has been postponed to a later date due to timetabling issues. It was originally to have taken place on Tuesday 19th and Wednesday 20th March. Further information and revised dates will be sent home as soon as the new dates can be confirmed.



*Regards,*

**Hugh Greer, Principal**

**Email:** [hugh.greer@education.vic.gov.au](mailto:hugh.greer@education.vic.gov.au)

## Student Birthdays

### MARCH

Eve S, Lil H, Finn M, Lulu c, Banjo A, Gwen C, Noah B, Chloe O, Mahli H, Logan L,  
Paddy McL, Summer D, Elise R, Harri T, Georgia W, Davi B, Leo K, Adam C, Cooper G,  
Lyda P, Paige W

## 2024 Term 1 Calendar Dates

Friday 8 March	Curriculum Day—NO CLASSES FOR STUDENTS
Mon 11 March	LABOUR DAY PUBLIC HOLIDAY
Thurs 21 March	Summer Lightning Prems (Yr 5 & 6 students)
Friday 22 March	Second Hand Uniform Stall (8.30 to 9.30 at The Stage)
Thurs 28 March	Last day of Term 1
Mon 15 April	First day of Term 2
Thurs 18 April	School Photos

## Assistant Principal's Report

*Dear Families,*

### Problem Solving vs Telling on Someone

#### *Helping Children Know When To Tell*

It's important to have conversations with children around unnecessary 'telling on' and beneficial informing. By doing this, children will know when to come to an adult and when they can solve problems on their own. Focusing on problem-solving also allows children to master a lifelong skill.

It is a normal part of development for young children to 'tell on' a sibling or same aged peer. As they learn to problem solve and navigate interactions, many children develop an understanding of when it is unnecessary to tell an adult.

Children who 'tell on' their peers when it's a minor problem usually do so for reasons including for attention, feeling important or to get someone in trouble in the event it would benefit themselves. Some examples can include.

- Telling on a sibling so they would get to play with a preferred toy instead of sharing.
- Telling the teacher when a peer didn't get their book out when they were asked,
- Reporting that a peer didn't push their chair in so they could then be first in line.

Informing or reporting is different from 'telling on' a peer and it's important children understand the difference and that there are situations when reporting to an adult is the right thing to do.

Here are 3 situations where children are encouraged to speak up:

- Someone is in danger or there is a chance someone could get hurt.
- Someone is being bullied
- Someone is doing something illegal

Sometimes children can be reluctant to report something out of fear of losing a friend or being ostracized. There is very much a mentality with today's youth that a friend who reports is a 'snitch'. In these cases it's important we help children understand when and why putting relationships at risk can be more important than shared secrecy.

Once our children *do* come to us with the information they believe is dangerous, we need to applaud them for their actions and their bravery. It's not an easy thing to do.





**Inspire**

The Inspire Program for students in Grades 3 to 6 is well underway with our second session occurring this week. The activities on offer this year are MasterChef, Claymation, Paper Mache Puppets, Surf Lifesaving and Lego Masters. Over the course of the program students will have the opportunity to learn and experience something new. The final session of Inspire is a celebration of the program. Horizons is a Prep-2 equivalent program to Inspire. Horizon will take place in Term 2 this year.



*Kind Regards,*

**Kirsty Egglestone, Assistant Principal**

**Email:**

[kirsty.egglestone@education.vic.gov.au](mailto:kirsty.egglestone@education.vic.gov.au)



# Runners Club



## Runners Club

Runners Club meets every Monday & Thursday

on the school oval from 8.15am - 8.45am

(Arrive at any time from 8.15 onwards)

Certificates are awarded to all runners

Medals for 100kms+ | Trophies for 200kms+

(Parents/carers & younger siblings are welcome to join in)



Get fit & Have fun!



## SOMERS PRIMARY SCHOOL

### OUT OF SCHOOL HOURS CARE PROGRAM FOR GRADES PREP –6

2024 Enrollments & Bookings are now open.

#### WHAT WE OFFER

Our OSHC service provides high quality affordable care that meets the Department of Education's National Quality Framework for primary school children. Our fun packed program includes a variety of craft, sports and other activities in a safe environment.

#### PROGRAM HOURS: MONDAY—FRIDAY

BSC—7.00AM—9.00AM

ASC 3.30PM - 6.00PM

#### PROGRAM FEES

##### PERMANENT BOOKINGS

BSC -\$20.00 - ASC \$21.00

##### CASUAL BOOKINGS

BSC -\$21.00 - ASC \$23.00



FOR MORE INFORMATION ON ENROLLING, CALL 5983 5546 OR EMAIL

somers.ps@education.vic.gov.au

Details are also on our website: somersps.vic.edu.au



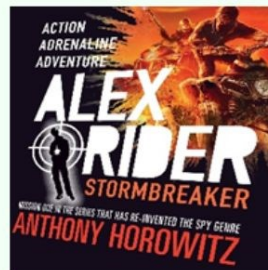
FIND US ON FACEBOOK



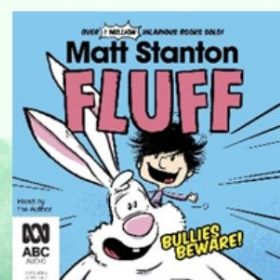
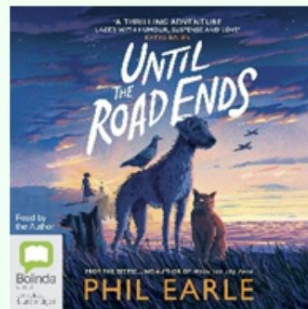


# Borrow Box: Read Anytime, Anywhere!

## eBooks



## eAudiobooks



# Community News



## COME & PLAY

JUNIOR GIRLS!

Come and Play Football with us down at Crib Point JFC for free! This is a great way to try football before committing to the season to see if you like it.

**CRIB POINT JFC**

Cyril Fox Reserve, Crib Point

**19TH MARCH**

4:30pm - 5:30pm



SCAN TO REGISTER





## FREE FRIDAY NIGHT T-BALL

**BOYS & GIRLS 6-10 Years Old**

Come and join the Mornington Pirates Baseball Club for a FREE 4 week T-Ball program. Aimed at introducing your kids to the sport of Baseball, this program promises 4 fun and inclusive sessions for all.

- Bring runners & water bottle
- No experience required
- No equipment needed
- Come for 1 or all sessions!
- Register now, or on the day

**FRIDAY AFTERNOONS**  
4:45PM - 6PM

**Session Dates**

Session 1	15th MARCH
Session 2	22nd MARCH
Session 3	29th MARCH
Session 4	5th APRIL

Register your interest  
secretary@morningtonbaseballclub.com.au

CB Wilson Reserve, Wilsons Road, Mornington


## CRIB POINT COMMUNITY MARKET

Saturday 9th March—9am to 1pm

At Crib Point Community House, 7 Park Rd, Crib Point

Hand-made products including; pens, candles, cards, jewellery, clothing, mosaics, decoupage pots, recycled goods, plants, Coffee Van and Devonshire Teas, Cribby Koala Treasure Hunt

For further information: email: [market@cpch.org.au](mailto:market@cpch.org.au) or phone: 59 83 9888



Mornington Peninsula Koala Conservation

### ATTENTION LANDHOLDERS FROM CERBERUS TO TYABB

MPKC invites landholders to participate in the 2024 Biolink Project. If you (or someone you know) lives in or around our target area, please send us an email at [mpkoalatreeplanting@outlook.com](mailto:mpkoalatreeplanting@outlook.com) to find out how to get involved. It's as easy as that!

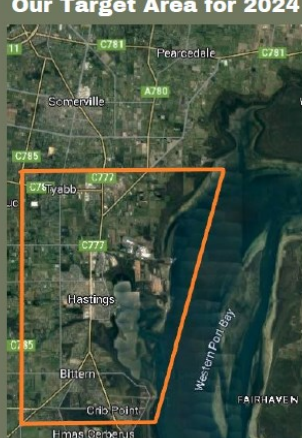
More than 70% of available koala habitat is on private property and is heavily fragmented. Habitat loss is one of the key reasons for declining koala populations.

Join us in creating a biolink across the Mornington Peninsula to ensure their survival and sustainable future.





#### Our Target Area for 2024



Mornington Peninsula Koala Conservation  
mp\_koalas [www.mpkoalas.org.au](http://www.mpkoalas.org.au)





At Padua College we offer an education for life, one that encourages students to utilise their God-given talent, be the best that they can be, and make a positive impact on the world.

Mornington Peninsula families are warmly invited to join one of our campus tours to explore the rich curriculum, sporting, cultural and spiritual life that our College can offer your child.

Meet our staff, see the school in action, and learn more about our new Year 7-8 Centre at Mornington and smaller class sizes.

**125**  
YEARS OF EXCELLENCE IN EDUCATION



**YEAR 7  
2026  
ENROLMENTS**

Open: 1 February 2024  
Close: 10 May 2024

Enrol online

[www.padua.vic.edu.au](http://www.padua.vic.edu.au)



## HOCKEY PLAYERS WANTED

UNDER 10 BOYS & GIRLS  
UNDER 12 BOYS & GIRLS  
UNDER 14 BOYS & GIRLS  
UNDER 16 BOYS & GIRLS

All ages.  
All skills levels.

- ▶ Training: Tuesday Nights
- ▶ Matches: U14 & U16 Fri. Nights, U10 & U12 Sat. Mornings
- ▶ Season Starts Friday 3<sup>rd</sup> May 2024

**FALCONS**  
Mornington Peninsula Hockey Club

 Peninsula Hockey Centre  
Monash University Peninsula Campus  
1 Bloom Street Frankston



- ▶ visit [mphc.org.au](http://mphc.org.au)
- ▶ visit [facebook.com/mphcofficial](https://facebook.com/mphcofficial)
- ▶ call (03) 8774 4784

### SOMERS PRIMARY SCHOOL

MEG IS A PARENT AT SOMERS PS WHO STARTED & LEADS OUR SCHOOL CHOIR

SHE IS OFFERING PRIVATE TUITION DURING SCHOOL TIME

IF YOUR CHILD IS INTERESTED IN ONE ON ONE LEARNING IN A FUN & SAFE ENVIRONMENT, PLEASE GET IN CONTACT!!

Phone: 0400 343 453  
Email: [megan.oldmeadow@gmail.com](mailto:megan.oldmeadow@gmail.com)

### PRIVATE SINGING LESSONS AT SCHOOL

MEGAN OLDMEADOW IS A QUALIFIED EARLY CHILDHOOD & MUSIC TEACHER

SHE IS AN EXPERIENCED PROFESSIONAL SINGER (SOPRANO) WHO REGULARLY PERFORMS SOLO & WITH NUMEROUS AWARDED CHOIRS



# LEARN TO SING WITH MEG